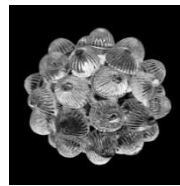




Works by MISHIMA Ritsue and MISHIMA Anju, participating artists of Yokohama Triennale 2014, will be on view at "Café Ogurayama" in Yokohama Museum of Art prior to the official opening of August 1.

# 『LUMINOUS PORT』 The opening day: Friday, July 11, 2014

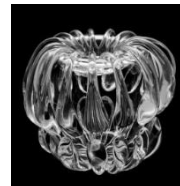
Enjoy the special moment at the cafe filled with the luminous art work. Original menu will be served by the glass created by MISHIMA Ritsue.



《Milleluci》 2013  
glass, H24.5xW29cm  
Photo:Francesco Barasciutti



《Blue Crystal》 2014  
Photo: ICHIKAWA Yasushi



《Tear of Light》 2013  
glass, H27xW30.5cm  
Photo:Francesco Barasciutti

Prior to the opening of Yokohama Triennale 2014 “ART Farenheit 451: Sailing into the sea of oblivion” (From Friday, August 1 to Monday, November 3 / at Yokohama Museum of Art and Shinko Pier Exhibition Hall), 『LUMINOUS PORT』, the limited café with the art works created by the mother-son unit of Ritsue MISHIMA, artist based in Venice, and MISHIMA Anju, the youngest exhibitor of the exhibition, will open at “Café Ogurayama” in Yokohama Museum of Art from Friday July 11 2014.

The museum café, where usually visitors talk together with having a drink, turns into the artistic space filled with the luminous art works of MISHIMA family.

The beverage served by the glass of MISHIMA Ritsue will be offered as the limited menu for “LUMINOUS PORT” during Yokohama Triennale 2014, from August 1.

We hope you enjoy this special occasion to have a look the art works prior to the exhibition opening.

## MISHIMA Ritsue

Born 1962 in Kyoto, JAPAN. Live in Kyoto and Venice, Italy. Glass objects portray line of light, using the traditional technique of Venetian glass and glass object portray line of light, are exhibited in many parts every world.



## MISHIMA Anju

Born 1989 in Venice, Italy. Live in Kyoto. He executes individual 2-dimensional works by vivid colors and beautiful lines.

Both photos: Francesco Barasciutti

**Outline of <LUMINOUS PORT>**

Venue	“Café Ogurayama” in Yokohama Museum of Art (3-4-1 Minatomirai, Nishi-ku, Yokohama, Japan)
Opening Period	Friday, July 11- Monday, November 3, 2014
Opening Hours	10:00–18:00 During the night opening period until 20:00 *From July 1-30 : 10:45-18:00 Closed: every Thursday on July, the 1 <sup>st</sup> and 3 <sup>rd</sup> Thursdays from August Last call: drink/15 minutes, Food/ 30 minutes, before closing
Contents	<ul style="list-style-type: none"> <li>•Display the works of MISHIMA Ritsue and MISHIMA Anju at the Cafe</li> <li>•Offer the beverage served by the glass made by MISHIMA Ritsue as the limited menu for “LUMINOUS PORT”</li> </ul>
Remarks	Admission Free
Contacts	About the artists and artworks: Organizing Committee for Yokohama Triennale TEL (045) 663-7232 About Cafe: Café Ogurayama TEL(045)221-0303

**Outline of Yokohama Triennale 2014**

Exhibition Title	Yokohama Triennale 2014 “ART Fahrenheit 451: Sailing into the sea of oblivion”
Exhibition Dates	Friday, August 1 – Monday, November 3, 2014 / Open for a total of 89 days Closed: every 1 <sup>st</sup> and 3 <sup>rd</sup> Thursdays (Aug. 7, 21 / Sep. 4, 18 / Oct. 2, 16)
Main Venues	Yokohama Museum of Art (3-4-1 Minatomirai, Nishi-ku, Yokohama, Japan) Shinko Pier Exhibition Hall (2-5 Shinko, Naka-ku, Yokohama, Japan)
Opening Hours	10:00–18:00 (Open until 20:00 on Aug. 9, Sept. 13, Oct. 11, and Nov. 1) *Admission until 30 minutes before closing time
Organizers	City of Yokohama, Yokohama Arts Foundation, Japan Broadcasting Corporation (NHK), The Asahi Shimbun, Organizing Committee for Yokohama Triennale
Contacts	Organizing Committee for Yokohama Triennale TEL (045) 663-7232

Press Contact  
Yokohama Triennale 2014 PR Office (at Youth Planning Center, Inc.)  
English: Iwakawa/Suzuki  
Tokaido Shibuya Bldg. 3F, 1-3-9 Shibuya, Shibuya-ku, Tokyo 150-8551  
TEL: 03-3486-0575 FAX: 03-3499-0958 E-mail: yt2014@ypcpr.com